



Company Profile



DRILLSTAR Industrial Co. Limited is specialized in offering full range of Foundation Drilling Tools and Accessories.

Our main products include Kelly bar, Drill bits, Casings, Anchorage, Strand steel, Drilling bucket, Auger, CFA, and so on.

With years experienced in foundation engineering, DRILLSTAR is committed to manufacturing high quality drilling tools and providing one-stop services for all customers. Up to now, our products had applied to many famous projects in China as well as the projects abroad like Brazil, Colombia, France, Greece, South Africa, UAE, Russia, Singapore, Vietnam, and Australia etc. We sincerely hope DRILLSTAR can have the honor to have close and long-term cooperation with your company!

Content:

Drilling Teeth & Holder Series

Drilling Buckets

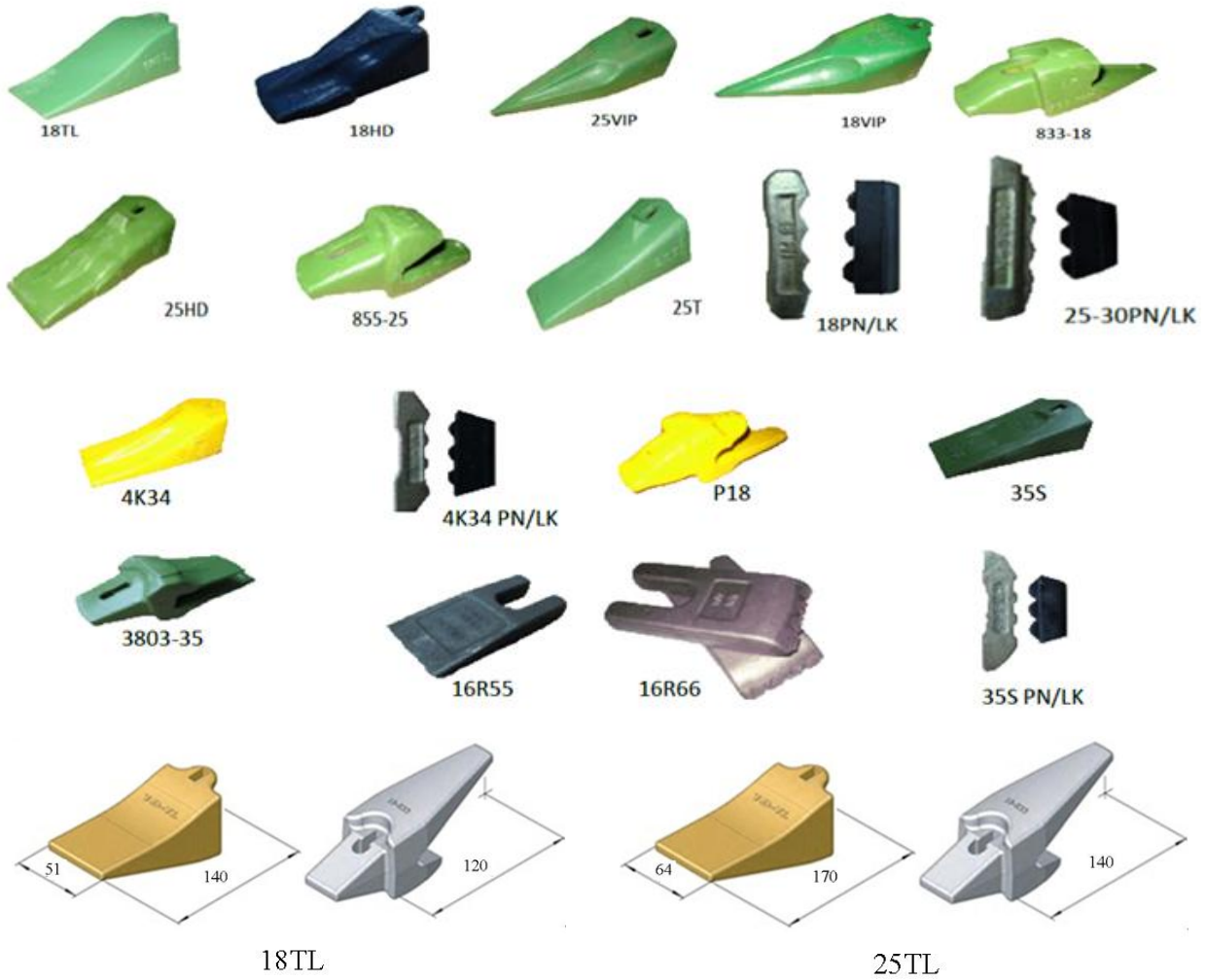
Casing Items

CFA

Kelly bar

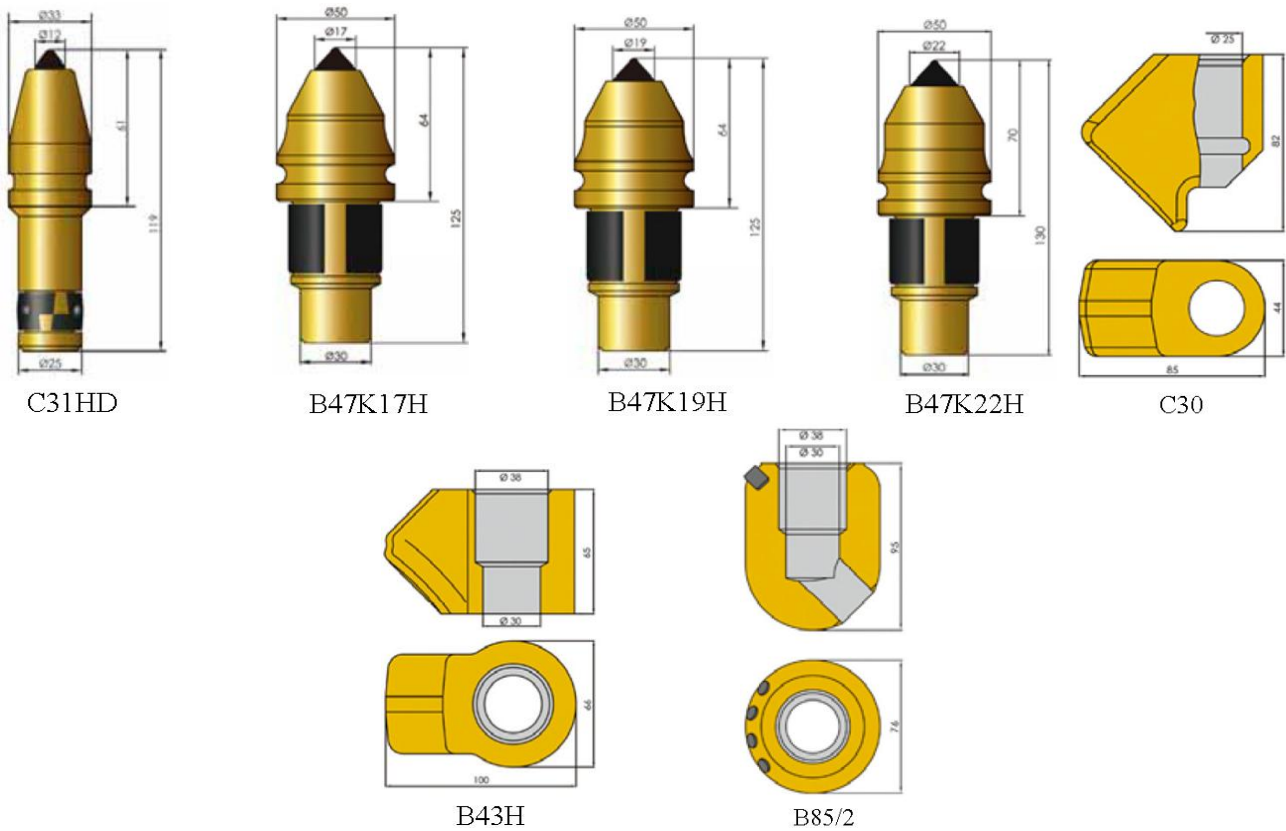
Drilling Teeth & Holder Series

1) Soil Drilling



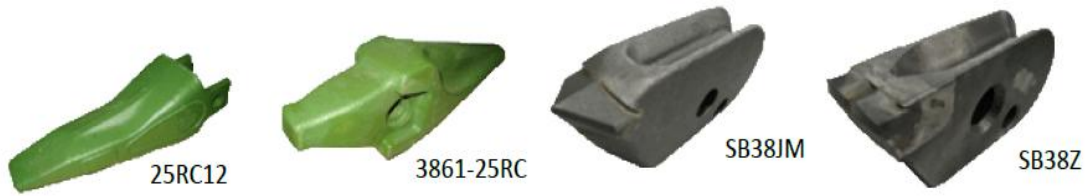
Part No.	Description	Unit Weight (Kg)
18TL	Soil Tooth	1.2
18HD	Heavy Duty Soil Tooth	1.3
833-18	Holder	1.8
18PN/LK	Pin/Lock	0.2
25T	Soil Tooth	2.3
25VIP	Chisel Soil Tooth	2.8
25HD	Heavy Duty Soil Tooth	2.6
855-25	Holder	3.3
25PN/LK	Pin/Lock	0.3
4K34	Soil Tooth	2.5
P18	Holder	3.4
4K34PN/LK	Pin/Lock	0.3
16R55	Soil Tooth	0.8
C355	Holder	3.2
35S	Soil Tooth	4.5
3803-35	Holder	7.3
35PN/LK	Pin/Lock	0.5

2) Rock Drilling



Part No.	Description	Unit Weight (Kg)
C31HD	Rock Drilling Bit	0.5
C30	Holder	1.2
B47K17.5H	Rock Drilling Bit	1.2
B47K19.5H	Rock Drilling Bit	1.2
B47K22H	Rock Drilling Bit	1.2
B47K17.5C/60	Rock Drilling Bit	1.5
B43H	Holder	2.2
B85	Holder	2.2
B85/2	Holder with Carbide tips	2.4

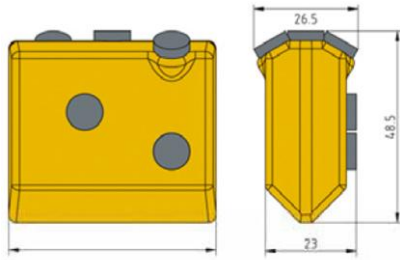
3) Diaphragm Wall Drilling



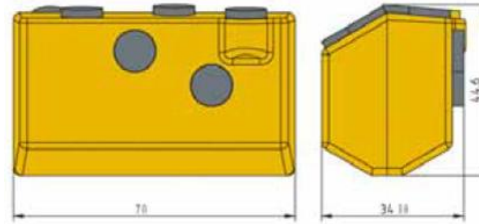
Part No.	Description	Unit Weight (Kg)
25RC10	Grab Tooth 10"	4.5
25RC12	Grab Tooth 12"	6.6
3861-25RC	Holder	14.5
25RCPN/25RCLK	Pin/Retainer	0.8
SB38JM	Single Edge Middle Carbide Tooth	2.0
SB38Z	Double Edge Middle Carbide Tooth	2.0
SB42JL	Left Carbide Tooth	2.0
SB42JR	Right Carbide Tooth	2.0

4) Cased Drilling and Soft Soil Drilling

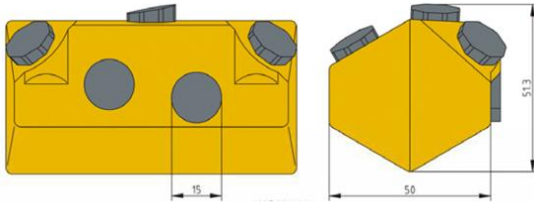




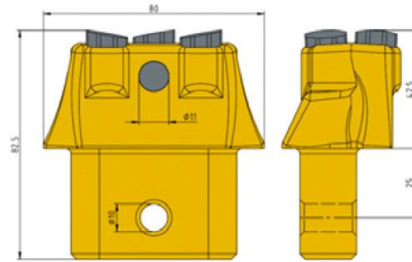
BA50-26



BA70-38



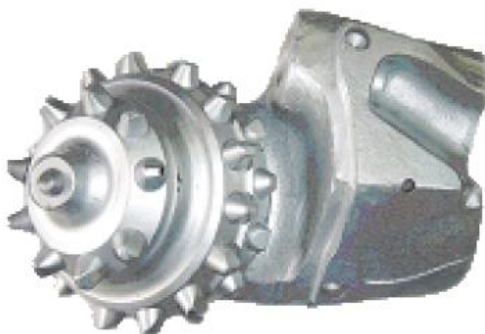
BA90-54



BA80-33

Part No.	Description	Unit Weight (Kg)
BA50-26	Welding Bar	0.8
BA55-23	Welding Bar	0.8
BA70-38	Welding Bar	1.2
BA90-54	Welding Bar	1.4
BA80-33	Welding Bar	1.3
BHA60/2	Holder with Carbide	2.8
K19	Flat Tooth with Carbide	1.0
BFZ79	Flat Tooth	5.4
BFZ80	Flat Tooth with Carbide	5.6
BHR73	Holder	4.3

5) Hard Rock Drilling Roller Bits



Single Roller Bit



Tricone Roller Bit

DRILLSTAR also manufactures different designs of bits for all brands/models of excavators. Moreover, it can also manufacture bits or drilling tools for different applications of any new design as per requirement of the customer.

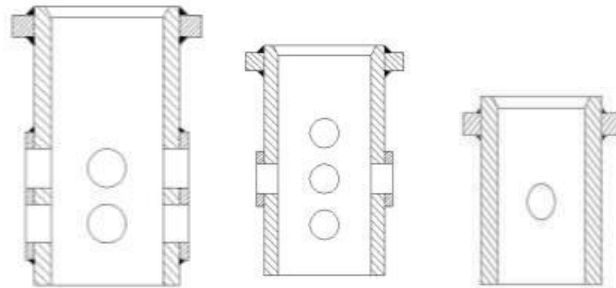
Drilling Buckets

Drillstar offers full ranges of drill bucket for all rotary drilling rigs, which are widely used in deep foundation engineering.

Models:

- A. Clay Drilling Bucket
- B. Rock Drilling Bucket
- C. Core Barrel
- D. Cleaning Bucket

Kelly box type:



Bauer type

General Type

Sany type

Kelly box Size:

200mm*200mm; 150mm*150mm; 130mm*130mm;
100mm*100mm;

* Compatible with all rotary drilling rigs

* Other specifications are available upon requests

Clay Drilling Bucket

Application: Drilling in clay, silt and loose to medium dense sand and gravel

You can choose Clay Drilling Bucket with

- A. Single bottom or Double bottom
- B. Single cut or Double cut
- C. Cylindrical barrel or Conical barrel



Drilling Diameter: 500mm-2500mm

Rock Drilling Bucket

Application: Drilling in medium to weak rock and in very dense sand and gravel

You can choose Rock Drilling Bucket with

- A. Single bottom or Double bottom
- B. Single cut or Double cut
- C. Cylindrical barrel or Conical barrel



Drilling Diameter: 500mm-2500mm

Core Barrels

Application: Drilling in rock or concrete or reinforced concrete
 Drilling Diameter: 500mm-2500mm
 You can choose Core Barrel with

- A. Rock Drill Bits (Applicable for strong rock up to 100Mpa or Rock with deep cracks)
- B. Roller Bits (Applicable for very strong rock formation with compressive strength more than 100Mpa)

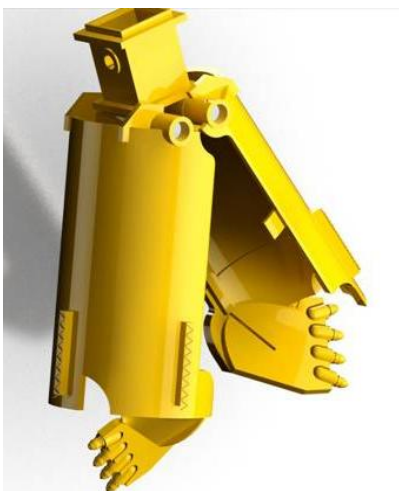


Cleaning Bucket

Application: Used for cleaning the bottom of borehole
 You can choose Cleaning Bucket with

- A. Single bottom or Double bottom
- B. Single cut or Double cut
- C. Cylindrical barrel or Conical barrel

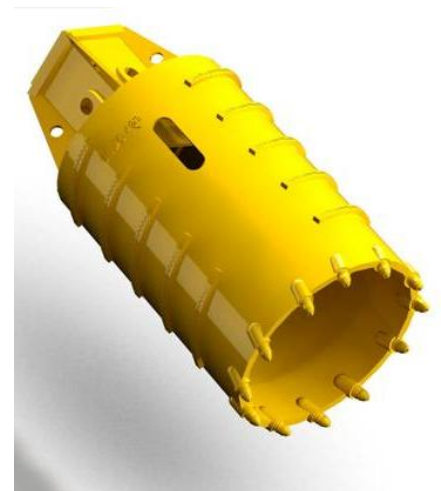
Drilling Diameter: 500mm-2500mm



Two-petal rock drill bucket



Rock expansion bit



Cora Barrel with rock bit

Drillstar offers full ranges of drill auger for all rotary drilling rigs, which are widely used in deep foundation engineering.

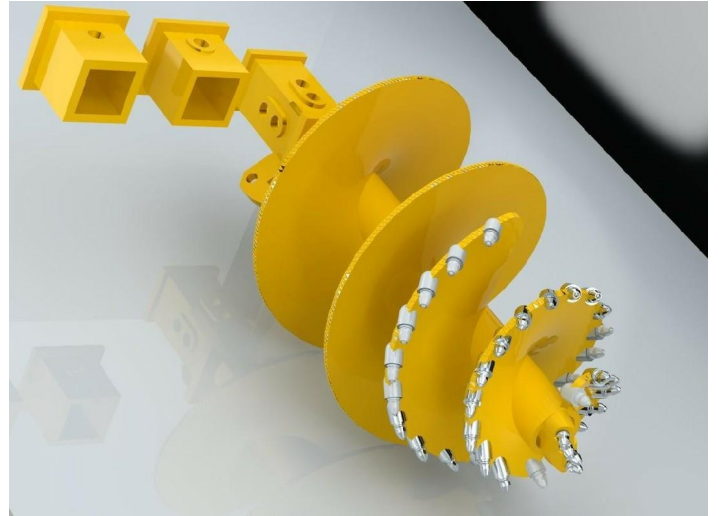
Rock Drilling Auger

Application: Drilling in medium to weak rock and in very dense sand and gravel

You can choose rock drilling auger with

- A. Single spiral or Double spiral
- B. Single cut or Double cut
- C. Cylindrical type or Conical type

Drilling Diameter: 400mm-2500mm



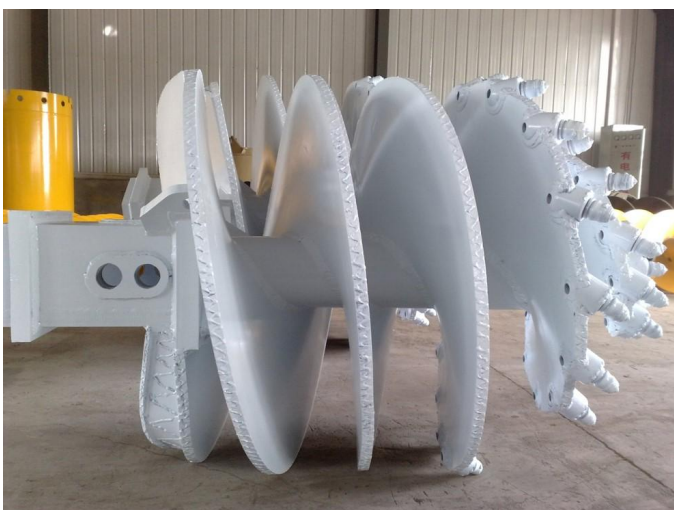
Clay Drilling Auger

Application: Drilling in clay, silt and loose to medium dense sand and gravel

You can choose rock drilling auger with

- A. Single spiral or Double spiral
- B. Single cut or Double cut
- C. Cylindrical type or Conical type

Drilling Diameter: 400mm-2500mm

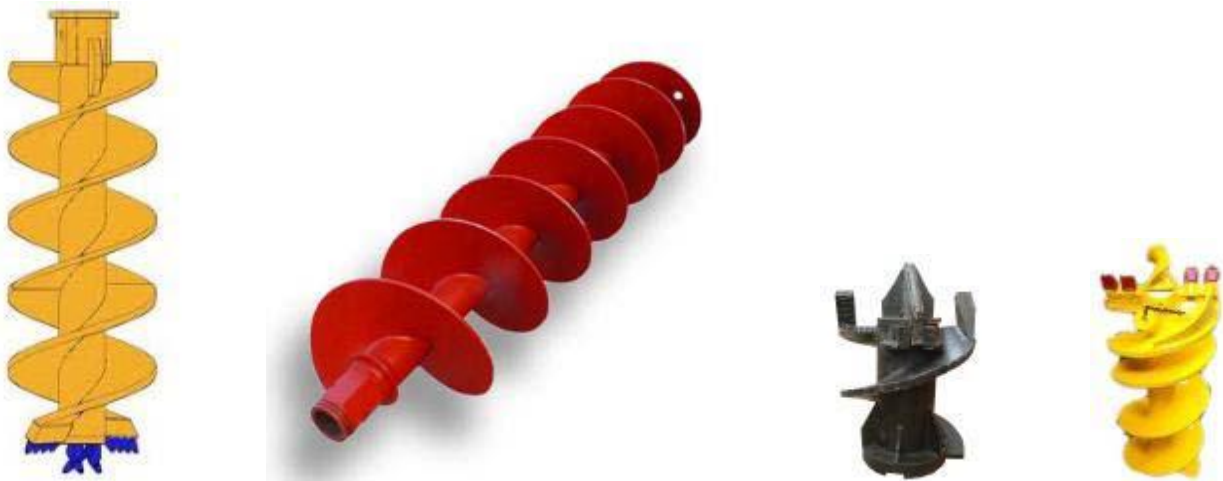


Continuous Flight Auger (CFA)

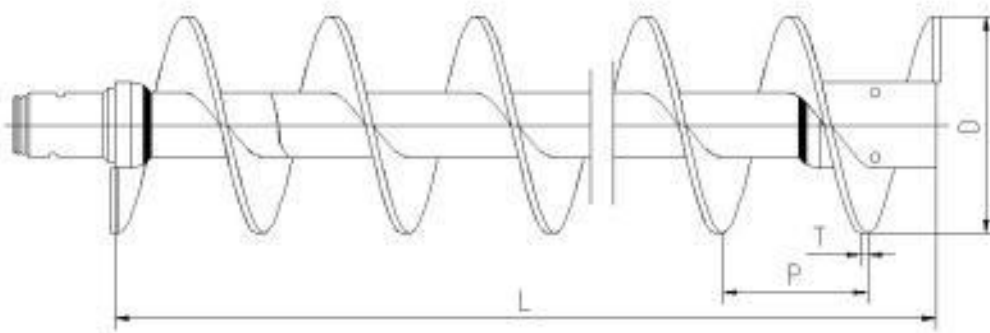
Drillstar produces various type of CFA matching with different drilling rigs, which can perform well in different soil conditions.

You can choose CFA with

- A. Hexagonal Joint or Flanged Joint
- B. Rock drill bits or Clay Drill bits

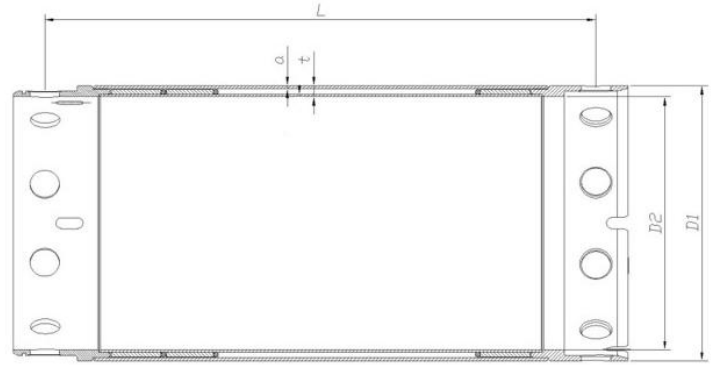


Specification:



D Diameter (mm)	L Length (mm)	P Pitch (mm)	T Flight Thickness(mm)
Φ300	3000	280	12
Φ400	3000	300	12
Φ500	3000	350	14
Φ600	3000	400	16
Φ700	3000	400	16
Φ800	3000	400	16
Φ900	3000	600	20
Φ1000	3000	600	20

Other sizes can be manufactured as per customer demand



Single-wall Casing

Single-wall casing technical data

Diameter		Effective Length					Casing-wall Thickness	Casing-wall Thickness	Bolt QTY
D1/D2	1m	2m	3m	4m	5m	6m	T	A	Bolt
(mm)	Weight(KG) Parts Number					(mm)	(mm)	(Nos)	
1300/1200	845	1475	2105	2735	3365	3995	20	40	12
1500/1400	1310	2220	3130	4040	4950	5860	25	50	12
1800/1700	1580	2675	3770	4865	5960	7055	25	50	16
2000/1880	2140	3355	4570	5785	7000	8215	25	60	12
2200/2080	2350	3690	5030	6370	7710	9050	25	60	12
2500/2380	2575	4100	5625	7150	8675	10200	25	60	16

*Other sizes can be manufactured as per customer demand

DRILLSTAR also manufactures other accessories used when drilling with casing e.g., Casing drive adapter, casing joints and casing shoes/blocks, etc.



Rotary drilling rig drive connector



Casing Drive Adapter



Casing Joints



Casing Shoes/Blocks

Spare parts of Rotary Drilling Rig (Mechanical and Electrical parts)

DRILLSTAR also provides spare parts such as swivel head, gimbal (universal joint), pulley, rotary fulcrum bearing, motor, reducer, pole spring, rotary driver spring, unlock frame, forcing stroke, expansion cylinder, electric element.



Swivel Head



Spring



Kelly Square Head



Plate



Guide frame of Kelly bar



Key of Kelly bar

Kelly bar

Kelly bar is the key part of a drilling machine, and its quality directly affects the performance of the whole machine. The main purpose of kelly bar is to transfer the torque of rotary drive and crowd pressure of the crowd system to the drilling tool. Based on the rich manufacturing experience and by absorbing the advanced technology both at home and abroad, we can produce first-class Kelly bar which can be compared favorably with the imported ones.



Kelly bar matched with MAIT



Kelly bar matched with SOILMEC

The features of Drillstar kelly bar are as follows:

1. Adopt the advanced technology of 6-key design in the world and standard modular design.
2. Equipped with advanced processing facilities, processing technic and manufacturing equipments, Drillstar Kelly bar enjoys a low weight, high strength, high straightness of single bar, thinner tube, smaller inter-tube distance and good abrasion resistance.
3. The raw materials are either imported from Germany like the high abrasion resistance materials, or from Chinese top manufacturer such as the seamless steel tube with alloy. All the tubes made in China are specially made seamless alloy tube, which guarantees the accuracy of the sizes, location, physical properties and easy welding. The small-diameter tubes undergo reheat treatment, which strength is up to 800kg level. The friction Kelly bar can be used under full torque.
4. All the outer keys have undergone special heat treatment; therefore, they possess higher hardness, higher flexibility and excellent welding properties, which provide higher abrasion resistance to the keys.

There are mainly two types of Kelly bars:

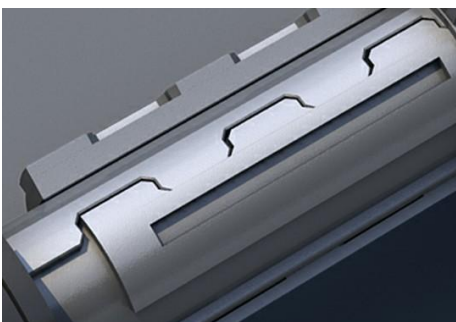
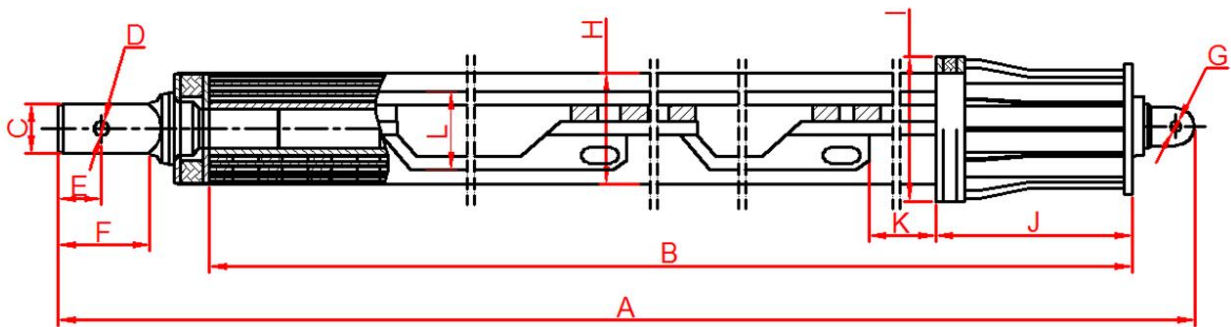
- 1- Interlocking Kelly Bar
- 2- Friction Kelly Bar



1) Interlocking Kelly Bar



Interlocking Kelly bars are used with piling rigs for drilling in dense sand and gravel and weak to strong rock. The Interlocking Kelly bars manufactured by DRILLSTAR can be fully locked by mechanical locking system on each section. Kelly bars can be equipped with specially designed springs or pressure plates for shock absorbing purpose.



Please see below chart of some of our standard productions for Interlocking kelly bars:

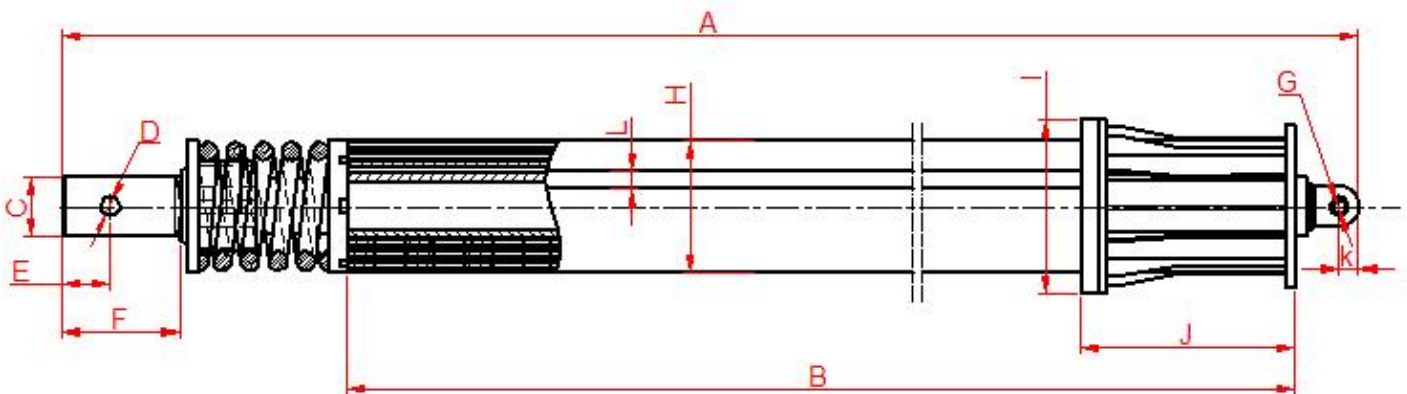
Identification No.	Torque(ton.m)	O.D.(mm)	Sections	Drilling Depth (m)
IK 36/470/3/27~28	36	470	3	27~28
IK 36/470/4/36~72	36	470	4	36~72
IK 25/440/3/36	25	440	3	36
IK 25/440/4/50	25	440	4	50
IK 28/394/3/24~48	28	394	3	24~48
IK 28/394/4/32~65	28	394	4	32~65
IK 18/377/3/36	18	377	3	36
IK 18/377/4/50	18	377	4	50
IK 22/406/3/36	22	406	3	36
IK 22/406/4/50	22	406	4	50
IK 36/508/4/60	36	508	4	60

*Other sizes can be manufactured as per customer demand

2) Friction Kelly Bar



Friction Kelly bars are used with piling rigs for drilling in silt, clay and less dense sand and gravel. The Friction Kelly bars manufactured by DRILLSTAR are un-lockable with drive keys on each section. Kelly bars can be equipped with specially designed springs or pressure plates for shock absorbing purpose. Please see below chart of some of our standard productions for Friction Kelly bars:



Identification No.	Torque(ton.m)	O.D.(mm)	Sections	Drilling Depth (m)
FK 36/470/3/27~28	36	470	3	27~28
FK 36/470/4/36~72	36	470	4	36~72
FK 25/440/3/36	25	440	3	36
FK 25/440/4/50	25	440	4	50
FK 25/440/5/65	25	440	5	65
FK 28/394/3/24~48	28	394	3	24~48
FK 28/394/4/32~65	28	394	4	32~65
FK 18/377/3/36	18	377	3	36
FK 18/377/4/50	18	377	4	50
FK 22/406/3/36	22	406	3	36
FK 22/406/4/50	22	406	4	50
FK 36/508/4/60	36	508	4	60
FK 36/508/5/75	36	508	5	75

*Other sizes can be manufactured as per customer demand

Quality control in manufacturing process of Kelly bar at DRILLSTAR starts from the selection and procurement of the material for Kelly bars. Use of special steel pipes and specially heat treated drive keys ensure the Quality and reliability of DRILLSTAR Kelly Bars. With proper operation & proper routine maintenance as instructed, our customer can get more production and long life of Kelly bar.

